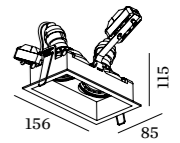
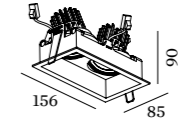
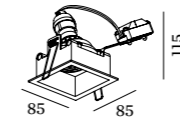
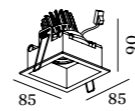
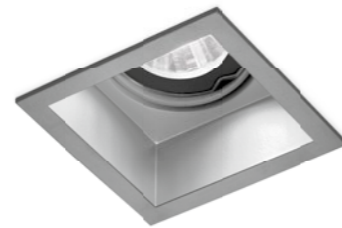




PLANO

CEILING RECESSED



1.0 LED

LED 7/10W | 350-500mA | 18Vf
COB 3-step | excl. power supply
aluminium powder coated

0.26kg IP20 0.3-1D

74x78 35°/35° 355° 95 2-18

	CODE
	118161W
	118161S
	118161B

Light Colour Selection

	LUMEN	CRI	CODE
2700K	420-590	>90	3
3000K	470-640	>90	5
1800-2850K	320-440	>95	9

ALWAYS USE

power supply

	CODE
350mA 10W	90223401
500mA 10W	90214404
500mA 15W dim	90224501

more power supplies on page 574

OPTIONAL

	CODE
plasterkit	90017104

1.0 PAR16

PAR16 max.35W | GU10
100-240VAC | 50-60Hz
aluminium powder coated

0.24kg IP20 0.9-1D

74x78 35°/35° 355° 120 2-18

	CODE
	11820W0
	11820S0
	11820B0

OPTIONAL

PAR16 LED GU10 7W
phase-cut dim

	CODE
2700K	901228W2
3000K	901228W4
1800-2850K	901229S9

more lamps and specs on page 577

OPTIONAL

	CODE
plasterkit	90017104

2.0 LED

2xLED 7/10W | 350-500mA | 18Vf
COB 3-step | excl. power supply
aluminium powder coated

0.48kg IP20 0.3-1D

74x148 35°/35° 355° 95 2-18

	CODE
	118261W
	118261S
	118261B

Light Colour Selection

	LUMEN	CRI	CODE
2700K	2x420-590	>90	3
3000K	2x470-640	>90	5
1800-2850K	2x320-440	>95	9

ALWAYS USE

power supply

	CODE
350mA 10W	90223401
500mA 10W	90214404
500mA 15W dim	90224501

more power supplies on page 574

OPTIONAL

	CODE
plasterkit	90017105

2.0 PAR16

2xPAR16 max.35W | GU10
100-240VAC | 50-60Hz
aluminium powder coated

0.44kg IP20 0.9-1D

74x148 35°/35° 355° 120 2-18

	CODE
	118220W0
	118220S0
	118220B0

OPTIONAL

PAR16 LED GU10 7W
phase-cut dim

	CODE
2700K	901228W2
3000K	901228W4
1800-2850K	901229S9

more lamps and specs on page 577

OPTIONAL

	CODE
plasterkit	90017105